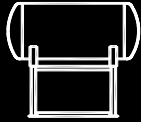


Standard
Deaerating
Units

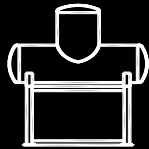


KANSAS CITY DEAERATOR



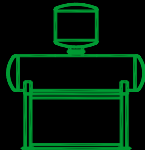
HS Series

Up to 350,000 #/hr
Low Headroom



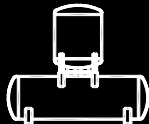
TC Series

Up to 250,000 #/hr
Tray Unit
Meets HEI



BDS Series

Up to 250,000 #/hr
Tray Unit
Meets HEI



DS Series

Up to 800,000 #/hr
Tray Unit
Meets HEI



VT Series

Up to 800,000 #/hr
Tray Unit
Minimal Plan Area
Meets HEI



HH Series

Up to 16,000,000 #/hr
Tray Unit-Meets HEI

BDS – Bolted Double Shell Deaerator

Principles of Operation

Corrosion in boiler cycles is caused by the presence of non-condensable gases such as oxygen and carbon dioxide in the boiler feed water. In order to remove the non-condensable gases, the feedwater is heated and vigorously scrubbed by a counter current flow of steam.

The incoming undeaerated water enters the deaerator through spring-loaded, stainless steel, spray valves. These variable orifice valves produce a fine spray in a uniform pattern from 5% to 200% of design. The fine droplets of water maximize the surface area in contact with steam, raising the temperature to within a few degrees of saturation temperature and instantly releasing the majority of the corrosive, non-condensable gases.

The preheated and partially deaerated water flows through the tray stack where the hottest, purest steam vigorously scrubs the water to heat it to saturation temperature and strip the last traces of dissolved gases. KCD trays are among the heaviest in the industry, fabricated of 16 gauge, type 430 stainless steel.

The entire deaeration process takes place in a stainless steel enclosure that eliminates any need for vessel lining or cladding and ensures a long life with little maintenance.

FEATURES

- Tray Model (BDS) Bolted Double Shell Deaerator
- Same high quality design as the TC Model except in a bolted 2 tank design for ease of installation
- Guaranteed performance over wide load swings
- Rugged design with “Central Station” durability
- Quiet operation
- Capacities up to 200,000 #/hr with 100% makeup, 250,000 #/hr with condensate
- Oxygen removal to 0.005 cc/liter (7ppb) Per HEI
- Certified ASME construction
- Options:
 - a. Accessory Package
 - b. Accessory Piping
 - c. BF Pump Package
- Heat Exchange Institute (HEI) design

BDS - Bolted Double Shell Deaerator



Performance –

Fill in and send to Kansas City Deaerator or request a detailed specification sheet.
Add additional thermal cases as needed.

PROJECT		OPERATING CONDITIONS		SPECIAL REQUIREMENTS	
DEAERATOR		Operating Pressure		HEI	
Quantity		FEEDWATER INLET		Post Weld Heat Treatment	
Capacity		% Makeup		Minimum Radiography	
DESIGN		MU Temperature		WFMP Testing	
ASME SEC. VIII, DIV.1		%Condensate			
Design Pressure		Cond. Temperature		BF PUMPS	
Full Vacuum Design		STORAGE CAPACITY		Quantity	
Design Temperature		Minutes at Overflow		Capacity	
Corrosion Allowance		Gallon at Overflow		TDH	

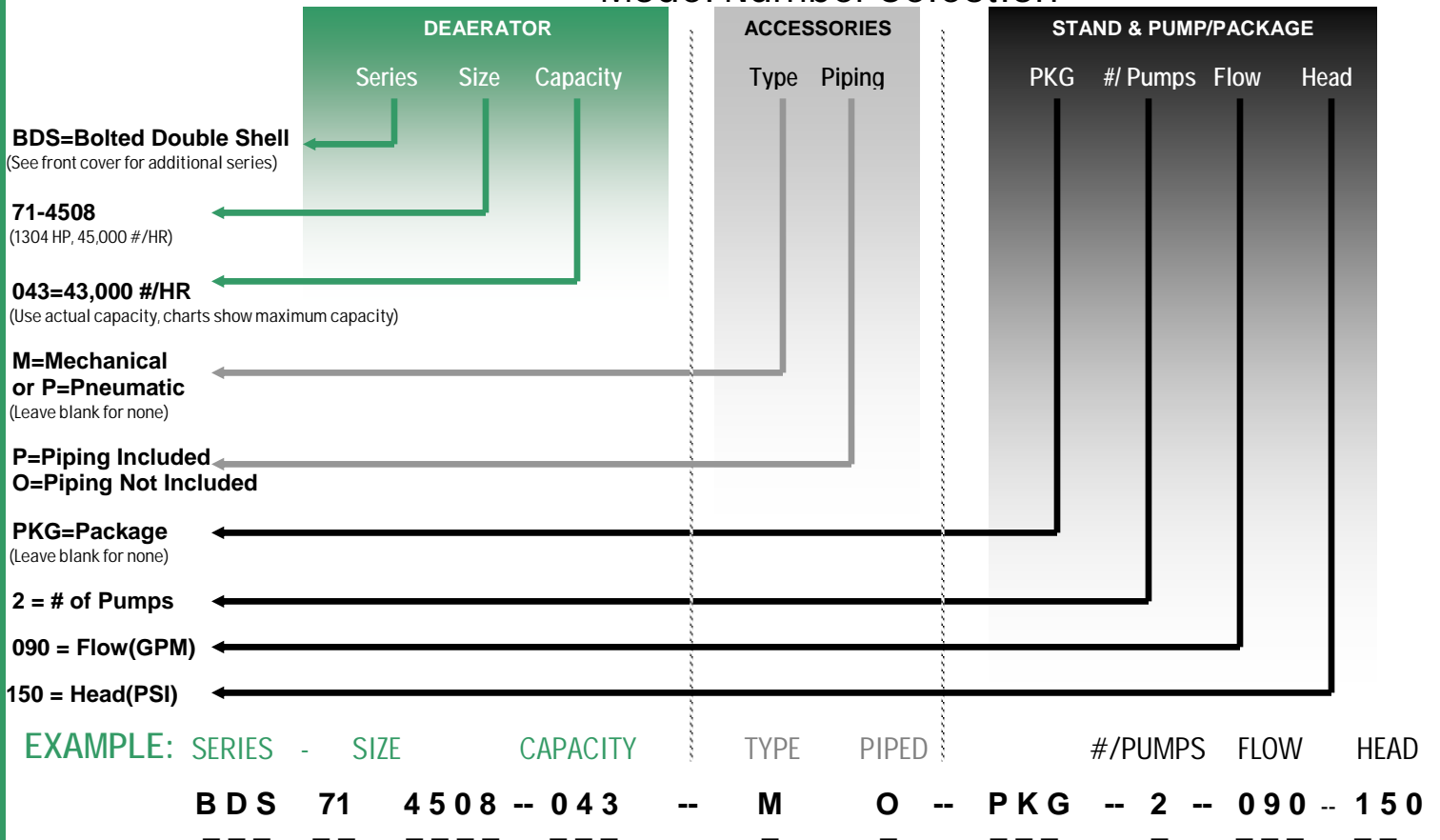
Accessories –

Select package or individual items

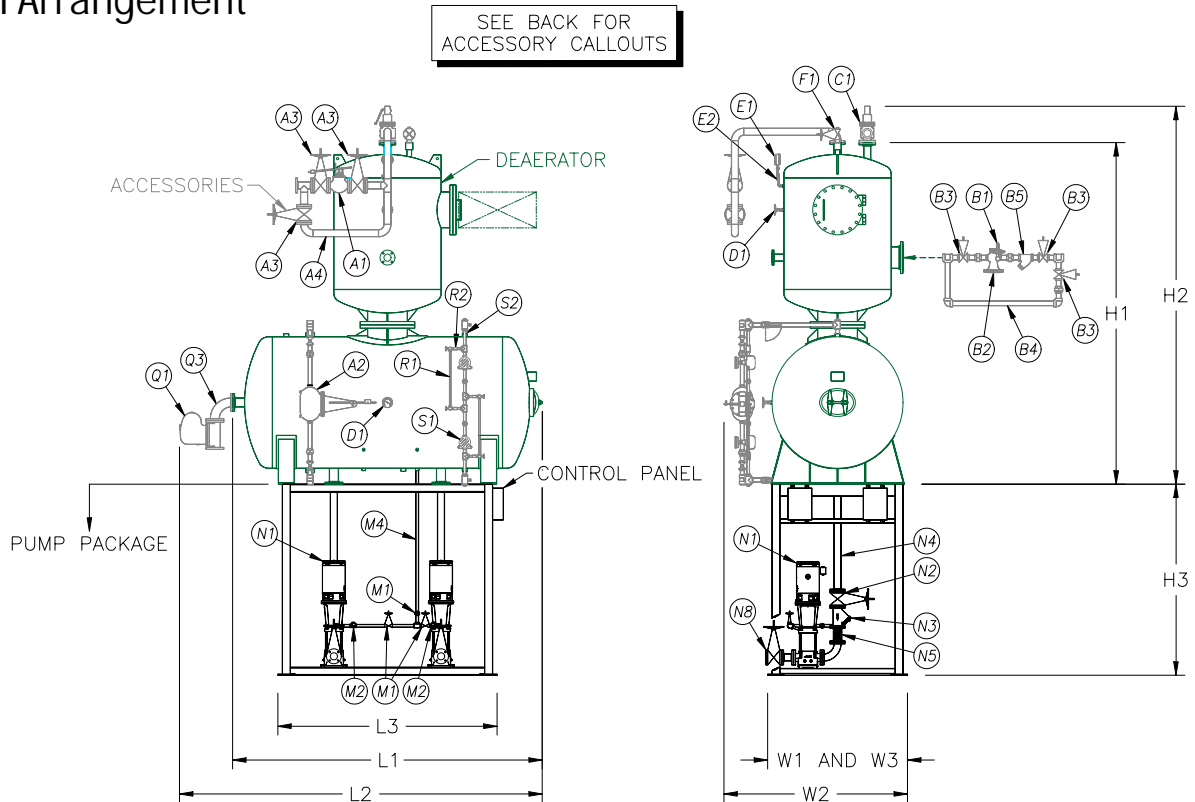
ITEM	DESCRIPTION	ACC PKG	PUMP PKG	✓ SELECT
A	WATER INLET			
A1	Inlet Valve			
	Mechanical	STD	STD	
	Pneumatic	OPT	OPT	
A2	Level Controller	STD	STD	
	Level Transmitter	OPT	OPT	
A3	Inlet Valve Bypass Valves	OPT	STD	
A4	Inlet Valve Bypass Piping	OPT	STD	
A5	Inlet Valve Bypass Strainer	OPT	STD	
B	STEAM CONTROL			
B1	Steam PRV		OPT	
	Self Contained	OPT	OPT	
	Pneumatic	OPT	OPT	
B2	Steam PRV Controller	OPT	OPT	
B3	Steam PRV Bypass Valves	OPT	OPT	
B4	Steam PRV Bypass Piping	OPT	OPT	
B5	Steam PRV Bypass Strainer	OPT	OPT	
C	RELIEF VALVE			
C1	Relief Valve			
	Sentinel	STD	STD	
	Full	OPT	OPT	
C2	Relief Valve Exhaust Piping	OPT	OPT	
D	THERMOMETER			
D1	(2) 5" Thermometer w/ss wells	STD	STD	
E	PRESSURE GAUGE			
E1	(1) 4 1/2" Pressure Gauge	STD	STD	
E2	Siphon & Cock	STD	STD	
E3	Pressure Transmitter	OPT	OPT	
F	VENT			
F1	Vent Valve	STD	STD	
F2	Vent Orifice w/Flange	OPT	OPT	
F3	Vent Bypass Valves	OPT	OPT	
F4	Vent Bypass Piping	OPT	OPT	
H	VACUUM BREAKER			
H1	Vacuum Breaker	STD	STD	

ITEM	DESCRIPTION	ACC PKG	PUMP PKG	✓ SELECT
M	BFP RECIRC			
M1	BFP Recirc Shutoff	NA	OPT	
M2	BFP Recirc Check	NA	OPT	
M3	BFP Recirc Orifice	NA	OPT	
	BFP Recirc ARC Valve	NA	OPT	
M4	BFP Recirc Piping	NA	OPT	
M5	BFP Recirc Pressure Gauge	NA	OPT	
N	BFP SUCTION			
N1	BF Pumps			
	(2) 100% Capacity	NA	STD	
	(3) 50% Capacity	NA	OPT	
	Motors			
	ODP	NA	STD	
	TEFC	NA	OPT	
N2	BFP Suction Isolation Valve	NA	STD	
N3	BFP Suction Strainer	NA	STD	
N4	BFP Suction Piping	NA	STD	
N5	BFP Suction Expansion Joint	NA	STD	
N6	BFP Discharge Pressure Gauge	NA	OPT	
N7	BFP Discharge Check Valve	NA	OPT	
N8	BFP Discharge Isolation Valve	NA	OPT	
O	CHEMICAL FEED			
O	Chemical Feed Quill	OPT	OPT	
Q	OVERFLOW			
Q1	Overflow Valve/Trap	STD	STD	
Q3	Overflow Piping	OPT	STD	
R	LEVEL SWITCH			
R1	Level Switches			
	High & Low (TWO)	STD	STD	
	High High (ADDITIONAL)	OPT	OPT	
R2	Level Switch Bridle Piping	OPT	STD	
S	GAUGE GLASS			
S1	Gauge Glass			
	Red Line Pyrex	STD	STD	
	Reflex	OPT	OPT	
	Magnetic	OPT	OPT	
S2	Gauge Glass Bridle	OPT	STD	

Model Number Selection



Typical Arrangement



SELECTION CHART

DA MODEL	Boiler Capacity (HP)	Rated Capacity (#/HR)	Storage to Overflow (Gallons)	Storage Capacity (Minutes)	Vessel Dimension (L1 x W1x H1)	Water Inlet "A" (in)	Steam Inlet "B" (in)	Empty Weight (lbs)	Operate Weight (lbs)	Flooded Weight (lbs)	Total Accessory (L2 x W2x H2)	Pump Package (L3 x W3x H3)
BDS18-3006-011	319	11,000	231	10	7'8"x3'5" x 11'0"	2.5	3	3,100	5,000	7,000	8'10"x4'9" x 12'6"	5'11"x3'5" x 5'0"
BDS32-4006-026	754	26,000	546	10	8'1"x4'5" x 11'9"	2.5	6	4,300	9,000	12,000	9'6"x5'9" x 13'3"	5'9"x4'5" x 5'0"
BDS50-4508-030	870	30,000	629	10	10'3"x4'11" x 12'5"	2.5	6	5,100	10,000	17,000	11'8"x6'9" x 13'11"	7'9"x4'11" x 6'6"
BDS50-4508-041	1,188	41,000	860	10	10'3"x4'11" x 12'5"	2.5	6	5,100	12,000	17,000	11'8"x6'9" x 13'11"	7'9"x4'11" x 6'6"
BDS71-4508-045	1,304	45,000	944	10	10'3"x4'11" x 12'10"	2.5	6	5,300	14,000	18,000	11'8"x6'9" x 14'4"	7'9"x4'11" x 6'6"
BDS71-5008-057	1,652	57,000	1,196	10	10'10"x5'5" x 13'4"	2.5	6	6,000	16,000	21,000	13'0"x7'0" x 14'10"	7'9"x5'5" x 6'6"
BDS93-5510-076	2,203	76,000	1,595	10	13'0"x5'11" x 14'0"	3	8	7,200	20,000	29,000	15'3"x7'9" x 15'6"	9'3"x5'11" x 8'0"
BDS122-5510-085	2,464	85,000	1,783	10	13'0"x5'11" x 14'2"	3	8	7,600	23,000	31,000	15'3"x7'9" x 15'9"	9'3"x5'11" x 8'0"
BDS122-5512-100	2,899	100,000	2,098	10	15'0"x5'11" x 14'2"	3	8	8,200	26,000	35,000	17'3"x7'9" x 15'9"	10'9"x5'11" x 8'0"
BDS149-5514-116	3,362	116,000	2,434	10	17'0"x5'11" x 14'4"	3	8	8,900	29,000	40,000	20'2"x7'9" x 15'11"	12'9"x5'11" x 8'0"
BDS149-6016-122	3,536	122,000	2,560	10	19'2"x6'5" x 15'5"	4	10	9,900	31,000	49,000	22'4"x8'0" x 16'11"	14'11"x6'5" x 9'0"
BDS184-6016-150	4,348	150,000	3,147	10	19'2"x6'5" x 15'6"	4	10	10,400	36,000	52,000	22'4"x8'0" x 17'4"	Consult Factory
BDS209-6016-157	4,551	157,000	3,294	10	19'2"x6'5" x 15'9"	6	10	10,600	38,000	54,000	22'4"x8'0" x 17'6"	Consult Factory
BDS209-6516-170	4,928	170,000	3,567	10	19'4"x6'11" x 16'3"	6	12	11,600	41,000	61,000	22'6"x8'9" x 18'0"	Consult Factory
BDS246-6516-200	5,797	200,000	4,196	10	19'4"x6'11" x 16'10"	6	12	13,000	47,000	69,000	22'6"x8'9" x 18'8"	Consult Factory

The above capacities are designed for 100% make up. For 50% make up and 50% condensate, increase capacities by 25%. A Model BDS246-6516 would be capable of 250,000 #/HR of 50% make up.

