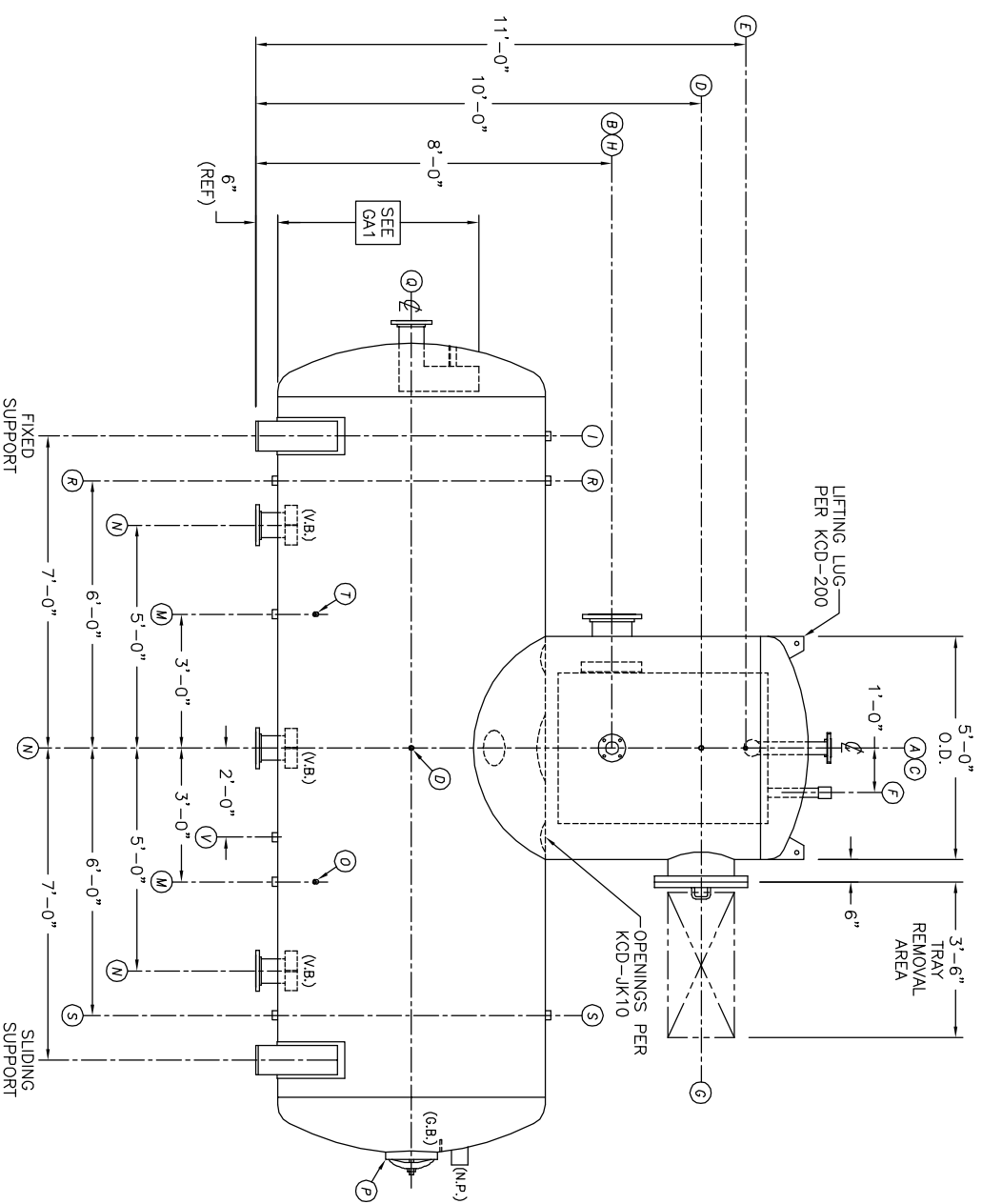


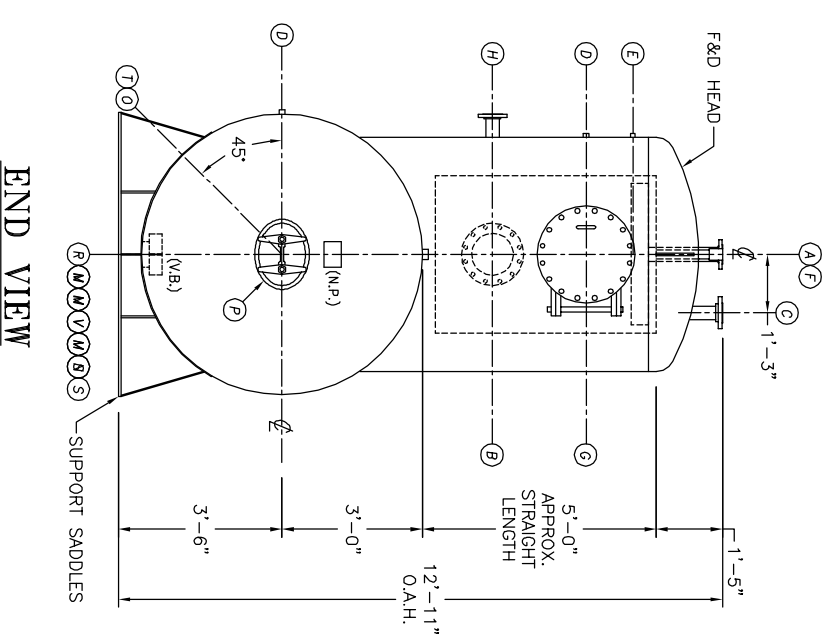
TOP VIEW

NOTE:  
 TURN ON/OFF  
 1-SUCT-GA2 IF YOU HAVE ONE SUCTION OR  
 2-SUCT-GA2-4 IF YOU HAVE TWO SUCTIONS  
 DEPENDING ON NEED. BEFORE USING THIS DRAWING.  
 TURN OFF NOTE LAYER BEFORE USING THIS DRAWING.

- NOTES:
1. SEE CONNECTION SCHEDULE FOR NOZZLE DESCRIPTIONS.
  2. STRAIGHT LENGTHS ARE APPROXIMATE. OVERALL LENGTH (OAL) IS TO BE HELD.
  3. FOR MISCELLANEOUS DETAILS SEE MD DRAWINGS
  4. DIMENSIONS ARE GIVEN FROM CENTER LINE OF TANKS TO NOZZLE CENTER LINE OR OUTSIDE FACE OF FLANGE.
  5. G.B. = GRAB BAR  
 V.B. = VORTEX BREAKER  
 N.P. = NAME PLATE  
 F.S. = FAR SIDE  
 D.S. = DRIP SHIELD  
 N.S. = NEAR SIDE  
 T.B. = TEE BAFFLE  
 C.L. = CENTER LINE



FRONT VIEW



END VIEW

NOTE:  
 PUMP SUCTION NOZZLES  
 WILL BE ADDED TO MATCH  
 ANY PUMPS SUPPLIED BY KCD

THIS DOCUMENT AND THE INFORMATION IT CONTAINS HAVE BEEN FURNISHED FOR USE BY YOUR OWN ORGANIZATION ONLY AND FOR PURPOSE CONSISTENT WITH THE TRANSACTION BETWEEN YOUR ORGANIZATION AND KANSAS CITY DEARATOR COMPANY. NO COPIES OF OR DATA FROM THIS DOCUMENT SHALL BE FURNISHED TO ANY THIRD PARTY WITHOUT THE WRITTEN AGREEMENT OF KANSAS CITY DEARATOR CO., OVERLAND PARK, KANSAS 66209

NO.	DATE	DESCRIPTION OF CHANGE
-	-	-
-	-	-
-	-	-

CLIENT: \_\_\_\_\_

**KANSAS CITY DEARATOR CO.**  
 6731 W. 121st STREET  
 OVERLAND PARK, KANSAS 66209  
 (913) 338-2111 FAX (913) 338-2144

JOB #	SCALE	DESIGNED	DRAWN	CHECKED	DATE	UTD
STD	NTS	MK	GENI	PC	6-16 2004	6-16 2004

TITLE: **GENERAL ARRANGEMENT**

MODEL: TCP149-6016

DWG. NO.: **TCP149-6016**