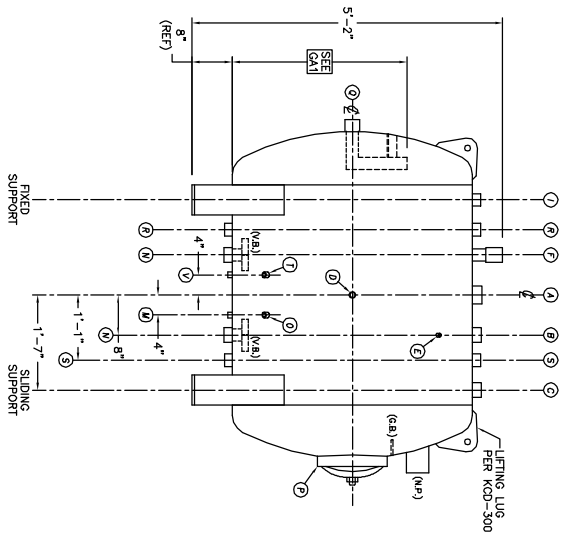
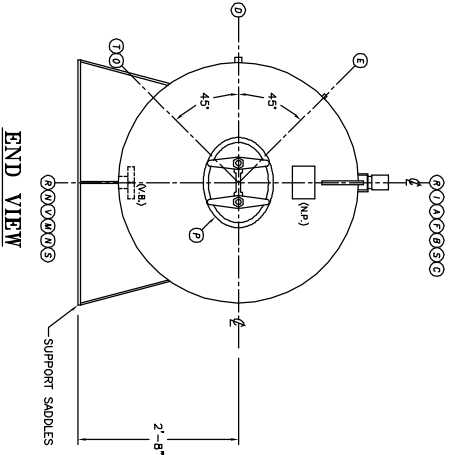


TOP VIEW



FRONT VIEW



END VIEW

- NOTES:**
1. SEE CONNECTION SCHEDULE FOR NOZZLE DESCRIPTIONS.
 2. STRAIGHT LENGTHS ARE APPROXIMATE. OVERALL LENGTH (OAL) IS TO BE FIELD.
 3. FOR MISCELLANEOUS DETAILS SEE MD DRAWINGS
 4. DIMENSIONS ARE GIVEN FROM CENTER LINE OF TANKS TO NOZZLE CENTER LINE OR OUTSIDE FACE OF FLANGE.
 5. G.B. = GRAB BAR
V.B. = VORTEX BREAKER
N.P. = NAME PLATE
F.S. = FAR SIDE
D.S. = DRIP SHIELD
N.S. = NEAR SIDE
T.B. = TEE BAR/TEE
C.L. = CENTER LINE

NOTE:
PUMP SUCTION NOZZLES
WILL BE ADDED TO MATCH
ANY PUMPS SUPPLIED BY KOD

THIS DOCUMENT AND THE INFORMATION IT CONTAINS ARE THE PROPERTY OF KANSAS CITY DEARATOR CO. AND ARE TO BE USED ONLY FOR THE PURPOSE AND FOR WHICH IT WAS PREPARED. NO COPIES OF OR DATA FROM THIS DOCUMENT SHALL BE FURNISHED TO ANY OTHER PARTY WITHOUT THE WRITTEN AGREEMENT OF KANSAS CITY DEARATOR CO., OVERLAND PARK, KANSAS 66209

NO.	DATE	DESCRIPTION OF CHANGE

CLIENT: **KANSAS CITY DEARATOR CO.**
6731 W. 121st STREET
OVERLAND PARK, KANSAS 66209
(913) 398-2111 FAX (913) 398-2144

JOB #	SCALE	DESIGNED	DRAWN	CHECKED	DATE	UNIT
STD	NTS	MK	GENI	PC	2003	2003

MODEL: HS4004
TITLE: GENERAL ARRANGEMENT
DWG. NO.: HS4004